



# Nrf3 Polyclonal Antibody

<b>Catalog No</b>	YP-Ab-01917
<b>Isotype</b>	IgG
<b>Reactivity</b>	Human;Rat;Mouse;
<b>Applications</b>	WB;ELISA
<b>Gene Name</b>	NFE2L3
<b>Protein Name</b>	Nuclear factor erythroid 2-related factor 3
<b>Immunogen</b>	The antiserum was produced against synthesized peptide derived from human NFE2L3. AA range:491-540
<b>Specificity</b>	Nrf3 Polyclonal Antibody detects endogenous levels of Nrf3 protein.
<b>Formulation</b>	Liquid in PBS containing 50% glycerol, 0.5% BSA and 0.02% sodium azide.
<b>Source</b>	Polyclonal, Rabbit,IgG
<b>Purification</b>	The antibody was affinity-purified from rabbit antiserum by affinity-chromatography using epitope-specific immunogen.
<b>Dilution</b>	Western Blot: 1/500 - 1/2000. ELISA: 1/10000. Not yet tested in other applications.
<b>Concentration</b>	1 mg/ml
<b>Purity</b>	≥90%
<b>Storage Stability</b>	-20°C/1 year
<b>Synonyms</b>	NFE2L3; NRF3; Nuclear factor erythroid 2-related factor 3; NF-E2-related factor 3; NFE2-related factor 3; Nuclear factor; erythroid derived 2, like 3
<b>Observed Band</b>	75kD
<b>Cell Pathway</b>	Nucleus .
<b>Tissue Specificity</b>	Highly expressed in human placenta and also in B-cell and monocyte cell lines. Low expression in heart, brain, lung, skeletal muscle, kidney and pancreas.
<b>Function</b>	function:Activates erythroid-specific, globin gene expression.,similarity:Belongs to the bZIP family.,similarity:Belongs to the bZIP family. CNC subfamily.,similarity:Contains 1 bZIP domain.,subunit:Heterodimer with MAFG, MAFK and other small MAF proteins that binds to the MAF recognition elements (MARE).,tissue specificity:Highly expressed in human placenta and also in B-cell and monocyte cell lines. Low expression in heart, brain, lung, skeletal muscle, kidney and pancreas.,
<b>Background</b>	This gene encodes a member of the cap 'n' collar basic-region leucine zipper family of transcription factors. The encoded protein heterodimerizes with small musculoaponeurotic fibrosarcoma factors to bind antioxidant response elements in target genes. This protein is a membrane bound glycoprotein that is targeted to the endoplasmic reticulum and the nuclear envelope. Pseudogenes of this gene are found on chromosomes 16, 17, and 18. [provided by RefSeq, Mar



2009],

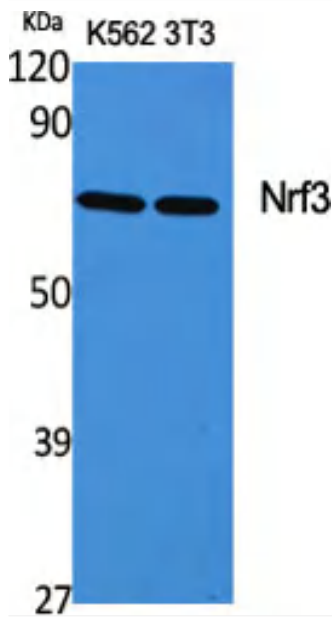
**matters needing attention**

Avoid repeated freezing and thawing!

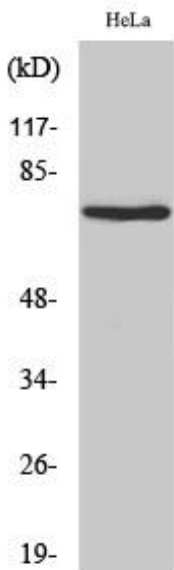
**Usage suggestions**

This product can be used in immunological reaction related experiments. For more information, please consult technical personnel.

**Products Images**



Western Blot analysis of various cells using Nrf3 Polyclonal Antibody cells nucleus extracted by Minute TM Cytoplasmic and Nuclear Fractionation kit (SC-003, Inventbiotech, MN, USA).



Western Blot analysis of HeLa cells using Nrf3 Polyclonal Antibody cells nucleus extracted by Minute TM Cytoplasmic and Nuclear Fractionation kit (SC-003, Inventbiotech, MN, USA).